



**AMERICAN**  
FIRE SUPPLY

THE BEST IN FIRE PROTECTION EQUIPMENT

**STOCK  
PRODUCT  
CATALOG**



## Payment Terms

Net 30 Days (with approved credit).

1 1/2% interest charge per month may be assessed against invoices not paid within 30 days. American Fire Supply accepts all major credit cards.

## Taxes

All prices and quotations are subject to local, federal, and state taxes where applicable.

## Quotation Terms

Quotations are honored for 30 days from the date of quotation.

## Freight

F.O.B. shipping point with no freight allowance unless otherwise specified. All small shipments are shipped via UPS only. Freight shipments within New England are shipped via Ross Express. Freight shipments outside of New England are shipped best way, prepaid and add. Any shipping instructions are subject to acceptance by seller.

## Catalog Specifications

American Fire Supply has the right to substitute material and/or change the design or other specifications, as shown and illustrated in any of our printed text, without accountability to purchasers.

## Returned Goods

Merchandise may not be returned for credit without the prior approval of American Fire Supply. An RMA# (return material authorization) is required for all returns. American Fire Supply will accept returned merchandise in its original condition minus a 30% restocking fee and any shipping charges as long as merchandise is returned within 90 days from date of invoice. Credit will apply to future purchases only.

## Custom Goods

Returns will not be accepted for custom and/or special ordered material.

## Damaged Goods

If the purchaser receives damaged merchandise, the purchaser must notify American Fire Supply within 10 business days. Damaged merchandise may be returned upon thorough examination.

## Liability

American Fire Supply accepts no liability for costs of field labor or materials to adjust, change, or correct any product.

## Warranty

American Fire Supply warrant products, for one year from the date of shipment, to be free from defects in material and workmanship when properly installed and maintained under normal use and service. Any field modifications may negate this warranty coverage. Warranty coverage is limited to the material replacement of the defective product and does not extend to incidental or consequential damages of any nature.

# TABLE of CONTENTS

## **Adapters** 18

Double Female Adapters - Double Male Adapters - Female x Male Adapters - Cam and Groove Adapters

## **Cabinets** 17

Valve Cabinets

## **Dry Hydrants and Strainers** 15

Male and Female Dry Hydrants - Dry Hydrant Signs - Dry Hydrant Strainers - Strainer Support Clamps

## **Fire Department Connections** 8 - 10

FDC Inlets (Complete Units) - Hydrants and Test Headers (Complete Units) - Inlet and Outlet Bodies Only - Roof Manifolds - Clapperless Bodies

## **FDC Accessories** 10 - 12

Reducers - Caps - Plugs - Ball Drips - Clappered Snoots - Open Snoots - Brass Check Valves - Sleeves - Round Wall Plates - Rectangular Wall Plates - FDC Signs

## **Fire Hoses** 14

Single Jacket - Double Jacket - Rubber Covered - Rack Hose - LDH Hose

## **Fire Hose Rack Assemblies** 14

Complete Hose Rack Assemblies - Hose Rack Covers

## **Nozzles** 14

Fog Nozzles - Plain Hose Nozzles - Forestry Nozzles

## **Sprinkler Accessories** 12

Sprinkler Extension Nipples - Head Boxes - Head Guards - Sprinkler Gauges - Alarm Bells - Expansion Tanks

## **Storz Connections** 13

Straight Storz Connections - 30° Storz Connections - 90° Storz Connections - Storz Hydrant Converters - Storz Caps - Siamese Storz Connections

## **Test Equipment** 15 - 17

Hydrant Diffusers - Valve Testing Devices - Pitot Kits - Gauges - Playpipes - Discharge Elbows - Flow Nozzles - Riptide Flow Test - Miscellaneous

## **Trim Valves** 6 - 7

Test & Drain Valves - Sight Glasses - Orifice Unions - 3Way Gauge Valves - Globe & Angle Valves - Ball Valves - OS&Ys - Pressure Relief Valves - Boiler Drains - Check Valves

## **Valves** 4 - 5

Angle Hose Valves - Pressure Restricting Hose Valves - Gate Valves - Pressure Reducing Valves - Butterfly Valves - Check Valves - Wyes



### Angle Hose Valves

- V25FM** 2½" Female x Male
- V25GM** 2½" Groove x Male
- V25FF** 2½" Female x Female
- V15FM** 1½" Female x Male
- V15FF** 1½" Female x Female



### Pressure Restricting Hose Valves

- AVAPR250F-I** 2½" Female x Male
- AVAPR250F-IG** 2½" Groove x Male



### Wedge Disc Gate Valves

- VAL53-25** 2½" Female x Male
- VAL53-3** 2½" Groove x Male



### Pressure Reducing Valves (Field Adjustable)

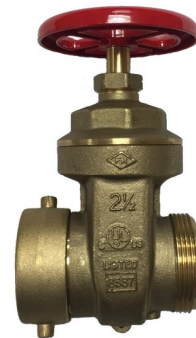
- ZW5000** 2½" Female x Male Angle
- ZW5000G** 2½" Groove x Male Angle
- ZW5004G** 2½" Groove x Groove Angle
- ZW5004ILG** 2½" Groove x Groove Straight

- All ZW5004 models come standard with built-in supervisory switch



### Hydrant Gate Valve (with Crank Handle)

- VAL05116C** 2½" Rough Brass
- VAL05116CA** 2½" Aluminum



### Hydrant Gate Valve (with Hand Wheel)

- VAL078** 2½" Female x Male



### Wye Valves

**WYEBALL2515** 2½" F Swivel  
NST x (2) 1½" M NST



### Swing Check Valves (Ductile Iron)

- CHK321526** 2"
- CHK321533** 2½"
- CHK321539** 3"
- CHK321547** 4"
- CHK321557** 6"
- CHK321576** 8"



### Riser Style Swing Check Valves

- CHK321526-S** 2"
- CHK321533-S** 2½"
- CHK321539-S** 3"
- CHK321547-S** 4"
- CHK321557-S** 6"
- CHK321576-S** 8"
- CHK321561-T** Trim for 2" valves
- CHK321562-T** Trim for 2½" - 3" valves
- CHK321563-T** Trim for 4" - 8" valves



### Butterfly Valves (Bronze)

- VAL311726** 1" Threaded
- VAL311736** 1¼" Threaded
- VAL311763** 1¼" Grooved
- VAL311746** 1½" Threaded
- VAL311764** 1½" Grooved
- VAL311756** 2" Threaded
- VAL311766** 2" Grooved
- VAL311761** 2½" Threaded
- VAL311774** 2½" Grooved



### Butterfly Valves (Ductile Iron)

- VAL311785** 2½" Grooved
- VAL311790** 3" Grooved
- VAL311795** 4" Grooved
- VAL311805** 6" Grooved
- VAL311815** 8" Grooved





**Test & Drain Valves**

- TESTDRAIN1 1"
- TESTDRAIN125 1¼"
- TESTDRAIN15 1½"
- TESTDRAIN2 2"



**Sight Glasses**

- SIGHTGLASS1 1"
- SIGHTGLASS1R 1" w/ ½" orifice
- SIGHTGLASS125 1¼"
- SIGHTGLASS2 2"



**Globe Valves**

- GV1/4 ¼"
- GV1/2 ½"
- GV3/4 ¾"
- GV1 1"
- GV125 1¼"
- GV15 1½"
- GV2 2"



**3-Way Gauge Valves**

- GAUGEVALVE ¼" F NPT



**Restricting Orifice Unions**

- ORIFICEUNION ½" F NPT x ½" F NPT w/ 3/32" orifice



**Angle Valves**

- AV1/4 ¼"
- AV1/2 ½"
- AV3/4 ¾"
- AV1 1"
- AV125 1¼"
- AV15 1½"
- AV2 2"



**Ball Valves**

- BV1/4 ¼"
- BV1/2 ½"
- BV3/4 ¾"
- BV1 1"
- BV125 1¼"
- BV15 1½"
- BV2 2"



**Swing Check Valves**

- SWCV1/2** 1/2"
- SWCV3/4** 3/4"
- SWCV1** 1"
- SWCV125** 1 1/4"
- SWCV15** 1 1/2"
- SWCV2** 2"



**Inline Spring Check Valves**

- SPCV1/2** 1/2"
- SPCV3/4** 3/4"
- SPCV1** 1"
- SPCV125** 1 1/4"
- SPCV15** 1 1/2"
- SPCV2** 2"



**OS&Y Valves - Bronze**

- OSY1** 1"
- OSY125** 1 1/4"
- OSY15** 1 1/2"
- OSY2** 2"



**Boiler Drains**

- BOILERD1/2** 1/2"
- BOILERD3/4** 3/4"



**Hose Bibbs**

- HOSEB1/2** 1/2"
- HOSEB3/4** 3/4"



**Adjustable Pressure Relief Valves**

- APRV1/2** 1/2"



### Flush Mount FDC Inlets

- 120** 2-way, 4" outlet
- 126** 2-way, 6" outlet
- 130** 3-way, 6" outlet
- 140** 4-way, 6" outlet
- 150** 4-way square, 6" outlet
- 160-8** 6-way, 8" outlet



### Free Standing FDC Inlets

- 220** 2-way, 4" outlet
- 221** 2-way, 6" outlet
- 230** 3-way, 4" outlet
- 231** 3-way, 6" outlet
- 240** 4-way, 6" outlet
- 250** 4-way square, 6" outlet



### Exposed FDC Inlets

- 320** 2-way, 4" outlet
- 321** 2-way, 4" groove outlet
- 322** 2-way, 6" outlet
- 330** 3-way, 4" outlet
- 331** 3-way, 6" outlet



### Single Inlet FDCs

- FDC111-01** 1½" NST inlet
- FDC111-02** 1½" NPSH inlet
- FDC111-04** 2½" NST inlet



### Single Outlet Wall Hydrants

- WH111-01** 2½" NST outlet



### Flush Mount Wall Hydrants / Test Headers (Without Valves)

- 420** 2-way, 4" inlet
- 422** 2-way, 6" inlet
- 430** 3-way, 6" inlet
- 440** 4-way, 6" inlet
- 450** 4-way square, 6" inlet
- 460-8** 6-way, 8" inlet





**Flush Mount Test Headers (With Valves)**

- 520 2-way, 4" inlet
- 522 2-way, 6" inlet
- 530 3-way, 6" inlet
- 540 4-way, 6" inlet
- 550 4-way square, 6" inlet
- 560-8 6-way, 8" inlet



**Free Standing Test Headers (With Valves)**

- 720 2-way, 4" inlet
- 721 2-way, 6" inlet
- 730 3-way, 4" inlet
- 740 4-way, 6" inlet
- 750 4-way square, 6" inlet



**Exposed Wall Hydrants**

- 820 2-way, 4" inlet
- 821 2-way, 6" inlet
- 830 3-way, 6" inlet



**Free Standing Hydrants / Test Headers (Without Valves)**

- 620 2-way, 4" inlet
- 621 2-way, 6" inlet



**Derby Style Test Headers (Without Valves)**

- PT231-01 3-way, 6" flange
- PT231-02 3-way, 6" groove
- PT241-01 4-way, 6" flange
- PT241-02 4-way, 6" groove
- PT261-02 6-way, 6" groove
- PT262-01 6-way, 8" flange
- PT262-02 6-way, 8" groove



**Exposed 2-Way & 3-Way  
FDC Inlets - Straight Body**

**FDC221 - FDC231**

4" 2-way through 6" 3-way



**Exposed 2-Way & 3-Way  
FDC Inlets - 90° Angle Body**

**FDC222 - FDC232**

4" 2-way through 6" 3-way



**Flush Mount Clappered  
Inlet Bodies**

**FDC121 - FDC123**

4" 2-way through 6" 2-way



**Exposed 2-Way & 3-Way  
Straight Roof Manifolds**

**RM221 - RM231**

4" 2-way through 6" 3-way



**Exposed 2-Way & 3-Way  
90° Angle Roof Manifolds**

**RM222 - RM232**

4" 2-way through 6" 3-way



**Clapperless Steel  
FDC Bodies**

**FDC134 - FDC164**

6" 3-way through 8" 6-way



**Clappered Snoots**

**720** 2½" F NST x 3" M NPT

**721** 2½" F NST x 3" F NPT



**Open Swivel Snoots**

**160** 2½" F NST x 2½" F NPT

**160-3** 2½" F NST x 3" F NPT



**Plugs & Chains**

**311** 2½"



**Caps & Chains**

- 31015-1 1½" NST
- 31015-3 1½" NPSH
- 31025-1 2½" NST



**Reducers - Female to Male**

- 327-1 2½" x 1½" NST
- 327-3 2½" x 1½" NPSH



**Breakable Caps**

- BRKCAP 2½" Red Plastic
- BRKCAP-MS Red Aluminum



**Ball Drips**

- BD1/2 ½"
- BD3/4 ¾"



**Male Snoots**

- 163A25 2½" M NST x 2½" F NPT
- 163A3 2½" M NST x 3" F NPT



**Sleeves**

- SLEEVE4 4" x 18"
- SLEEVE6 6" x 18"



**Rectangular Wall Plates**

- ESCH-2H 2-way Horizontal
- ESCH-3H 3-way Horizontal
- ESCH-4H 4-way Horizontal
- ESCH-6H 6-way Horizontal
- ESCH-2V 2-way Vertical
- ESCH-3V 3-way Vertical
- ESCH-4V 4-way Vertical
- ESCH-4S 4-way Square



**Round Wall Plates**

- 24209-25 2½"
- 590-4 4"
- 590-6 6"
- 590-8 8"



**FDC Swivel Kits**

- SWIVELKIT 2½" NST



### Check Valves (Brass)

- CHKGG15** 1½" Grv x Grv
- CHKGM15** 1½" Grv x M NPT
- CHKFM15** 1½" F NPT x M NPT
- CHKGG2** 2" Grv x Grv
- CHKGM2** 2" Grv x M NPT
- CHKFM2** 2" F NPT x M NPT
- CHKGG25** 2½" Grv x Grv
- CHKGM2** 2½" Grv x M NPT
- CHKFM2** 2½" F NPT x M NPT
- CHKGG25** 2½" Grv x Grv
- CHKGM25** 2½" Grv x M NPT
- CHKFM25** 2½" F NPT x M NPT
- CHKGG3** 3" Grv x Grv
- CHKGM3** 3" Grv x M NPT
- CHKFM3** 3" F NPT x M NPT
- CHKGG4** 4" Grv x Grv
- CHKGM4** 4" Grv x M NPT
- CHKFM4** 4" F NPT x M NPT



### Expansion Tanks

- EXPTANK2.5G** 2½ gallon



### Fire Sprinkler Gauges

- GAU11-550** Water 0-300 PSI
- GAU11-551** Air 0-300 PSI
- GAU11-552** Air w/ Retard 0-80 PSI
- GAU11-553** Air/Water 0-300 PSI



### Alarm Bells & Back Boxes

- 02-452** 6" 120VAC Alarm Bell
- 02-452-50** 6" 24VDC Alarm Bell
- 02-450** 10" 120VAC Alarm Bell
- 02-450-50** 10" 24VDC Alarm Bell
- 02-454** Alarm Bell Back Box



### Sprinkler Gauge Kits

- GAU11-566** Air/Water 0-300 PSI



### Sprinkler Head Guards

- SPKGD1** ½" & ¾" Non-recessed, Red
- SPKGDREC** ½" Recessed, Chrome



### Sprinkler Head Boxes

- HEADBOX6** 6 Head Capacity
- HEADBOX12** 12 Head Capacity



### Sprinkler Extension Nipples

- SPKEXT12** ½" long x ½" NPT
- SPKEXT34** ¾" long x ½" NPT
- SPKEXT1** 1" long x ½" NPT
- SPKEXT15** 1½" long x ½" NPT
- SPKEXT2** 2" long x ½" NPT
- SPKEXT12-34** ½" long x ¾" NPT





**Straight Storz w/ Caps**

- SZ4X15** 4" Storz x 1½" F NPT
- SZ4X2** 4" Storz x 2" F NPT
- SZ4X25** 4" Storz x 2½" F NPT
- SZ4X3** 4" Storz x 3" F NPT
- SZ4X4** 4" Storz x 4" F NPT
- SZ4X6** 4" Storz x 6" F NPT
- SZ5X4** 5" Storz x 4" F NPT
- SZ5X6** 5" Storz x 6" F NPT
- SZ6X6** 6" Storz x 6" F NPT



**30° Storz w/ Caps**

- SZ4X430** 4" Storz x 4" F NPT
- SZ4X630** 4" Storz x 6" F NPT
- SZ5X430** 5" Storz x 4" F NPT
- SZ5X630** 5" Storz x 6" F NPT



**90° Storz w/ Caps**

- SZ4X490** 4" Storz x 4" F NPT
- SZ4X690** 4" Storz x 6" F NPT
- SZ5X490** 5" Storz x 4" F NPT
- SZ5X690** 5" Storz x 6" F NPT



**Storz Hydrant Converters**

- SZ4X45** 4" Storz x 4½" F NST
- SZ5X45** 5" Storz x 4½" F NST



**Storz Caps**

- SZCAP4** 4"
- SZCAP5** 5"



**Siamese Storz Connections**

- SZ11A** 4" F NPT x 4" Storz x (2) 2½" F NST
- SZ11B** 4" F NPT x 5" Storz x (2) 2½" F NST





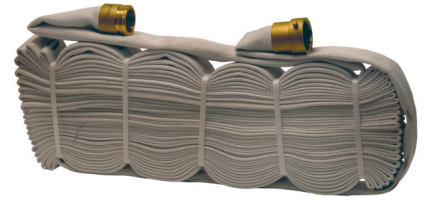
### Single Jacket Fire Hoses

- HSE15-5SJ1** 1½" x 50'
- HSE15-1SJ1** 1½" x 100'
- HSE25-25SJ1** 2½" x 25'
- HSE25-5SJ1** 2½" x 50'
- HSE25-1SJ1** 2½" x 100'



### Double Jacket Fire Hoses

- HSE15-5DJ1** 1½" x 50'
- HSE15-1DJ1** 1½" x 100'
- HSE25-10DJ1** 2½" x 10'
- HSE25-25DJ1** 2½" x 25'
- HSE25-5DJ1** 2½" x 50'



### Rack Hoses

- HSERH50-1B** 1½" x 50' NST
- HSERH75-1B** 1½" x 75' NST
- HSERH100-1B** 1½" x 100' NST



### Rubber Covered Fire Hoses

- HSE25-25RC1R** 2½" x 25' Red
- HSE25-5RC1R** 2½" x 50' Red



### Hose Rack Covers

- HOSECVR-RA32** 32"H x 22"W



### Fire Hose Rack Assemblies

- HRA155** 1½" x 50'
- HRA157** 1½" x 75'
- HRA151** 1½" x 100'
- HRA255** 2½" x 1½" x 50'
- HRA257** 2½" x 1½" x 75'
- HRA251** 2½" x 1½" x 100'



### Plastic Fog Nozzles

- 1575** 1½"



### Brass Fog Nozzles

- 1675** 1½"



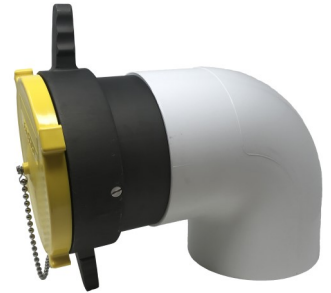
### Straight Dry Hydrants

- DHM45180** 4½" Male NST
- DHM6180** 6" Male NST
- DHF45180** 4½" Female NST
- DHF6180** 6" Female NST



### Dry Hydrants w/o PVC

- DHM45LPVC** 4½" Male NST
- DHM6LPVC** 6" Male NST
- DHF6LPVC** 6" Female NST



### 90° Dry Hydrants

- DHM4590** 4½" Male NST
- DHM590** 5" Male NST
- DHM690** 6" Male NST
- DHF690** 6" Female NST



### Dry Hydrant Signs

**DRYHYDSIGN** Red lettering on white background



### Strainer Support Clamps

- STRAINCLAMP6** 6"
- STRAINCLAMP8** 8"



### Dry Hydrant Strainers

- STRAINER6FL** 6"
- STRAINER8FL** 8"



### Playpipes

- PLAYPIPE25** 2½" NST w/ 1-1/8" orifice tip
- PLAYPIPE25-NT** 2½" NST w/o tip



### Playpipe Tips

- PLAYPIPETIP1125** 1-1/8" orifice
- PLAYPIPETIP175** 1¾" orifice



### Hydrant Diffusers

**DIFFUSER100** 2½" F NST w/  
100 PSI/1680 GPM gauge

**DIFFUSER160** 2½" F NST w/  
160 PSI/2120 GPM gauge

**DIFFUSERCASE** Carrying  
case for diffuser



### Riptide Flow Testing System™

**RIPTIDE1** Single Action

**RIPTIDE2** Double Action

**RIPTIDE3** Triple Action

**RIPTIDE4** Quad Action



### Riptide Gauges

**GAUGERIPR** 4" 0-200 PSI,  
¼" NPT on right

**GAUGERIPL** 4" 0-200 PSI,  
¼" NPT on left



### Gauges

**GAUGEDIG** 2½" -30-0-300 PSI Digital

**GAUGE60** 2½" 0-60 PSI

**GAUGE100** 2½" 0-100 PSI

**GAUGE200** 2½" 0-200 PSI

**GAUGE300** 2½" 0-300 PSI

**GAUGE60-4** 4" 0-60 PSI

**GAUGE100-4** 4" 0-100 PSI

**GAUGE200-4** 4" 0-200 PSI

**GAUGE300-4** 4" 0-300 PSI

**GAUGE100-GPM** 4" 100 PSI / 1680 GPM

**GAUGE160-GPM** 4" 160 PSI / 2120 GPM



### Pitot Test Kits

**PITOT** Pitot tube, blade, (1) 2½" 100 PSI  
gauge, Teflon tape

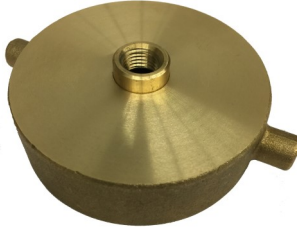
**PITOTECON** Pitot tube, blade, (1) 2½" 100  
PSI gauge, (1) 2½" 160 PSI gauge, hydrant  
cap, 3-way bleeder valve



### Valve Testing Device

**VALVETEST2** Up to 500 GPM/250 PSI

**VALVETEST2CASE** Carrying case



### Hydrant Caps

**HYDCAP** 2½" F NST x ¼" NPT



### Discharge Elbows

**ELBOW45RB25** 2½" 45°  
Rough Brass

**ELBOW45PC25** 2½" 45°  
Polished Chrome

**ELBOW90RB25** 2½" 90°  
Rough Brass



### 3-Way Bleeder Valve

**PITOTBLEED3** ¼"



### Cap Gauges

**CAPGAUGE25-1** 100 PSI

**CAPGAUGE25-2** 200 PSI

**CAPGAUGE25-3** 300 PSI



### Universal Spanner Wrenches

**SPANNER-K** Aluminum

**SPANNER233** Cast Iron (red finish)



### Storz Spanner Wrench

**SZWRENCH** Fits 2" - 5" storz



### Hydrant Wrench

**HYDWR** Fits pentagonal hydrant nuts up to 1¾" from point to flat and square nuts up to 1¾", pin and rocker lugs from 1½" to 6"



### Valve Cabinets

**JL8515F10** 18" x 18" x 8" Recessed w/ Full Acrylic Door

**JL8515S21** 18" x 18" x 8" Recessed w/ Solid Door

**JL8515F10FX2** 18" x 18" x 8" Recessed w/ Full Acrylic Door, Fire Rated

**JL8515S21FX2** 18" x 18" x 8" Recessed w/ Solid Door, Fire Rated

**JL8415F10** 18" x 18" x 10" Recessed w/ Full Acrylic Door

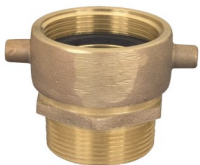
**JL8415S21** 18" x 18" x 10" Recessed w/ Solid Door





### Female x Male Adapters - Rigid

**A34FGH-34M2** ¾" F GH x ¾" M NPT  
**A34F2-34MGH** ¾" F NPT x ¾" M GH  
**A15F1-34MGH** 1½" F NST x ¾" M GH  
**A15F2-15M1** 1½" F NPT x 1½" M NST  
**A15F1-15M2** 1½" F NST x 1½" M NPT  
**A2F2-15M1** 2" F NPT x 1½" M NST  
**A2F2-25M1** 2" F NPT x 2½" M NST  
**A25F2-25M1** 2½" F NPT x 2½" M NST  
**A25F1-34M2** 2½" F NST x ¾" M NPT  
**A25F1-34MGH** 2½" F NST x ¾" M GH  
**A25F1-1M2** 2½" F NST x 1" M NPT  
**327-1RBA** 2½" F NST x 1½" M NST  
**327-2RBA** 2½" F NST x 1½" M NPT  
**A25F1-2M2** 2½" F NST x 2" M NPT  
**A25F1-25M2** 2½" F NST x 2½" M NPT  
**A25F1-3M2** 2½" F NST x 3" M NPT  
**A3F2-25M1** 3" F NPT x 2½" M NST  
**A4F2-45M1** 4" F NPT x 4½" M NST  
**A45F1-25M1** 4½" F NST x 2½" M NST  
**A45F1-4M2** 4½" F NST x 4" M NPT



### Female x Male Adapters - Swivel

**A15FSW1-15M2** ¾" F GH x ¾" M NPT  
**A25FSW1-15M2** ¾" F NPT x ¾" M GH  
**A25FSW1-2M2** 1½" F NST x ¾" M GH  
**A25FSW1-25M2** 1½" F NPT x 1½" M NST  
**A25FSW1-3M2** 1½" F NST x 1½" M NPT



### Double Male Adapters

**A34M2-34MGH** ¾" M NPT x ¾" M GH  
**A15M2-15M1** 1½" M NPT x 1½" M NST  
**A2M2-15M1** 2" M NPT x 1½" M NST  
**A25M1-2M2** 2" M NPT x 2½" M NST  
**A25M2-25M1** 2½" M NPT x 2½" M NST  
**A25M1-25M1** 2½" M NST x 2½" M NST  
**A3M2-25M1** 3" M NPT x 2½" M NST  
**A4M2-4M1** 4" M NPT x 4" M NST  
**A4M2-45M1** 4" M NPT x 4½" M NST



### Double Female Adapters

**A34F2-34FSWG** ¾" F GH x ¾" F NPT  
**A15FSW1-15F2** 1½" F NST x 1½" F NPT  
**AFSW151-151** 1½" F NST x 1½" F NST  
**A25FSW1-2F2** 1½" F NST x 2" F NPT  
**160RBA** 2½" F NST x 2½" F NPT  
**AFSW251-251** 2½" F NST x 2½" F NST  
**A25FSW1-3F2** 2½" F NST x 3" F NPT



## Thread Chart

Size	NST or NH		NPSH		BRID		CHIC		CIN (New)		CIN (Old)	
	Fire Hose Thread		Straight Pipe Thread		Bridgeport, CT		Chicago Fire Dept.		Cincinnati, OH		Cincinnati, OH	
	ODM	TPI	ODM	TPI	ODM	TPI	ODM	TPI	ODM	TPI	ODM	TPI
1½"	1.9900"	9	1.8788"	11.5	--	--	1.9330"	11.5	--	--	--	--
2"	2.5156"	8	2.3528"	11.5	--	--	--	--	--	--	--	--
2½"	3.0686"	7.5	2.8430"	8	3.1800"	8	2.9900"	7.5	3.0580"	6	3.093"	6
3"	3.6239"	6	3.4700"	8	--	--	--	--	--	--	--	--
3½"	4.2439"	6	3.9700"	8	--	--	4.0520"	8	--	--	--	--
4"	5.0000"	4	4.4700"	8	--	--	5.0000"	4	--	--	--	--
4½"	5.7609"	4	4.9700"	8	--	--	5.7609"	4"	--	--	--	--
5"	6.2600"	4	5.5300"	8	--	--	6.2600"	4	--	--	--	--
6"	7.0250"	4	6.5900"	8	--	--	--	--	--	--	--	--
Size	CLEV		COL		DEN		DET		NEW		NYC	
	Cleveland, OH		Columbus, OH		Denver, CO		Detroit, MI		Newport, RI		New York Corp.	
	ODM	TPI			ODM	TPI	ODM	TPI	ODM	TPI	ODM	TPI
1½"	--	--	--	--	--	--	--	--	--	--	2.0930"	11
2"	--	--	--	--	--	--	--	--	--	--	2.5470"	11
2½"	3.0781"	8	3.125"	7.5	3.093"	8	3.125"	7.5	3.1870"	6	3.0000"	8
3"	--	--	--	--	--	--	--	--	--	--	--	--
3½"	--	--	--	--	--	--	3.625"	6	--	--	--	--
4"	--	--	4.843"	6	--	--	4.535"	6	--	--	--	--
4½"	--	--	--	--	--	--	--	--	--	--	--	--
5"	--	--	--	--	--	--	6.055"	4	--	--	--	--
6"	--	--	--	--	--	--	--	--	--	--	--	--
Size	NYFD		PITT		PHX		RICH		TMP		TOL	
	New York Fire Dept.		Pittsburgh, PA		Phoenix, AZ		Richmond, VA		Tempe, AZ		Toledo, OH	
	ODM	TPI	ODM	TPI	ODM	TPI	ODM	TPI	ODM	TPI	ODM	TPI
1½"	2.1000"	8	--	--	--	--	--	--	--	--	--	--
2"	--	--	--	--	--	--	--	--	--	--	--	--
2½"	3.0300"	8	3.0625"	6	3.0625"	6	3.3100"	8	3.070"	6	3.0000"	8
3"	3.6300"	8	--	--	--	--	--	--	--	--	--	--
3½"	4.0700"	8	--	--	--	--	--	--	--	--	--	--
4"	4.6100"	8	--	--	4.547"	6	--	--	4.500"	6	--	--
4½"	5.8000"	4	--	--	--	--	--	--	--	--	--	--
5"	--	--	--	--	--	--	--	--	--	--	--	--
6"	--	--	--	--	--	--	--	--	--	--	--	--



222 BEMIS ROAD  
FITCHBURG, MA 01420

---

1105A SOUTH AIRPORT CIRCLE  
EULESS, TX 76040

---

P: 978-345-7570 | 800-252-7570  
F: 978-345-7572  
[sales@americanfiresupply.com](mailto:sales@americanfiresupply.com)  
[www.americanfiresupply.com](http://www.americanfiresupply.com)