

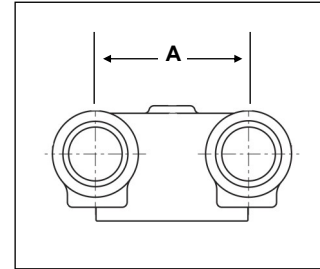
## Flush Mount Inlets (Clappered)

Used by the fire department to supply additional water to a building's fire protection system. These flush mounted units are generally concealed behind the outside wall of the building. Bodies are constructed of cast brass.

250 GPM per inlet, each inlet features individual drop clapper. U/L Listed.



FDC121-01



Part #	Size	Orientation	Outlet Type	Inlet Type	A
FDC121-01	4" x 2½" x 2½"	Back Outlet	Female NPT	Female NPT	7"
FDC122-01	4" x 2½" x 2½"	Bottom Outlet	Female NPT	Female NPT	7"
FDC123-01	4" x 2½" x 2½"	Top Outlet	Female NPT	Female NPT	7"
FDC121-03	4" x 2½" x 2½"	Back Outlet	Groove	Female NPT	7"
FDC122-03	4" x 2½" x 2½"	Bottom Outlet	Groove	Female NPT	7"
FDC123-03	4" x 2½" x 2½"	Top Outlet	Groove	Female NPT	7"
FDC121-023	6" x 3" x 3"	Back Outlet	Female NPT	Female NPT	7 5/8"
FDC122-023	6" x 3" x 3"	Bottom Outlet	Female NPT	Female NPT	7 5/8"
FDC123-023	6" x 3" x 3"	Top Outlet	Female NPT	Female NPT	7 5/8"
FDC121-0233	6" x 3" x 3"	Back Outlet	Groove	Female NPT	7 5/8"
FDC122-0233	6" x 3" x 3"	Bottom Outlet	Groove	Female NPT	7 5/8"
FDC123-0233	6" x 3" x 3"	Top Outlet	Groove	Female NPT	7 5/8"

## Inlet / Outlet Connection Bodies (Clapperless)

Designed for a variety of uses: flush and free-standing FDCs, flush and free-standing test headers and hydrants, and flush roof manifolds.

2-Way bodies are made from cast brass.

3-Way, 4-Way and 6-Way bodies are made from schedule 40 steel

Each inlet rated at 250 GPM

Working pressure rated at 300 PSI



FDC131-03SG

Part #	Type	Size	Orientation	Outlet Type	Inlet Type	Finish	½ Taps	Weight
PT121-01	2-Way	4" x 2½" x 2½"	Back Inlet	Female NPT	Female NPT	Rough Brass	0	14 lbs.
PT122-01	2-Way	4" x 2½" x 2½"	Angle Inlet	Female NPT	Female NPT	Rough Brass	1	17 lbs.
PT121-03	2-Way	4" x 2½" x 2½"	Back Inlet	Female NPT	Groove	Rough Brass	0	14 lbs.
PT122-03	2-Way	4" x 2½" x 2½"	Angle Inlet	Female NPT	Groove	Rough Brass	1	17 lbs.
PT121-023	2-Way	6" x 3" x 3"	Back Inlet	Female NPT	Female NPT	Rough Brass	0	15 lbs.
PT122-023	2-Way	6" x 3" x 3"	Angle Inlet	Female NPT	Female NPT	Rough Brass	1	18 lbs.
PT121-0233	2-Way	6" x 3" x 3"	Back Inlet	Female NPT	Groove	Rough Brass	0	15 lbs.
PT122-0233	2-Way	6" x 3" x 3"	Angle Inlet	Female NPT	Groove	Rough Brass	1	18 lbs.
FDC134-03SG	3-Way	6" x 3" x 3" x 3"	End Outlet	Groove	Groove	Red Enamel	3	39 lbs.
FDC131-03SG	3-Way	6" x 3" x 3" x 3"	Back Outlet	Groove	Groove	Red Enamel	2	45 lbs.
FDC132-03SG	3-Way	6" x 3" x 3" x 3"	Angle Outlet	Groove	Groove	Red Enamel	1	45 lbs.
FDC134-03S	3-Way	6" x 3" x 3" x 3"	End Outlet	Groove	Female NPT	Red Enamel	3	39 lbs.
FDC131-03S	3-Way	6" x 3" x 3" x 3"	Back Outlet	Groove	Female NPT	Red Enamel	2	45 lbs.
FDC132-03S	3-Way	6" x 3" x 3" x 3"	Angle Outlet	Groove	Female NPT	Red Enamel	1	45 lbs.

Continued on page 2

Part #	Type	Size	Orientation	Outlet Type	Inlet Type	Finish	½ Taps	Weight
FDC134-01SG	3-Way	6" x 3" x 3" x 3"	End Outlet	Female NPT	Groove	Red Enamel	3	39 lbs.
FDC131-01SG	3-Way	6" x 3" x 3" x 3"	Back Outlet	Female NPT	Groove	Red Enamel	2	45 lbs.
FDC132-01SG	3-Way	6" x 3" x 3" x 3"	Angle Outlet	Female NPT	Groove	Red Enamel	1	45 lbs.
FDC134-01S	3-Way	6" x 3" x 3" x 3"	End Outlet	Female NPT	Female NPT	Red Enamel	3	39 lbs.
FDC131-01S	3-Way	6" x 3" x 3" x 3"	Back Outlet	Female NPT	Female NPT	Red Enamel	2	45 lbs.
FDC132-01S	3-Way	6" x 3" x 3" x 3"	Angle Outlet	Female NPT	Female NPT	Red Enamel	1	45 lbs.
FDC144-03SG	4-Way	6" x 3" x 3" x 3" x 3"	End Outlet	Groove	Groove	Red Enamel	3	50 lbs.
FDC141-03SG	4-Way	6" x 3" x 3" x 3" x 3"	Back Outlet	Groove	Groove	Red Enamel	2	56 lbs.
FDC142-03SG	4-Way	6" x 3" x 3" x 3" x 3"	Angle Outlet	Groove	Groove	Red Enamel	1	56 lbs.
FDC144-03S	4-Way	6" x 3" x 3" x 3" x 3"	End Outlet	Groove	Female NPT	Red Enamel	3	50 lbs.
FDC141-03S	4-Way	6" x 3" x 3" x 3" x 3"	Back Outlet	Groove	Female NPT	Red Enamel	2	56 lbs.
FDC142-03S	4-Way	6" x 3" x 3" x 3" x 3"	Angle Outlet	Groove	Female NPT	Red Enamel	1	56 lbs.
FDC144-01SG	4-Way	6" x 3" x 3" x 3" x 3"	End Outlet	Female NPT	Groove	Red Enamel	3	50 lbs.
FDC141-01SG	4-Way	6" x 3" x 3" x 3" x 3"	Back Outlet	Female NPT	Groove	Red Enamel	2	56 lbs.
FDC142-01SG	4-Way	6" x 3" x 3" x 3" x 3"	Angle Outlet	Female NPT	Groove	Red Enamel	1	56 lbs.
FDC144-01S	4-Way	6" x 3" x 3" x 3" x 3"	End Outlet	Female NPT	Female NPT	Red Enamel	3	50 lbs.
FDC141-01S	4-Way	6" x 3" x 3" x 3" x 3"	Back Outlet	Female NPT	Female NPT	Red Enamel	2	56 lbs.
FDC142-01S	4-Way	6" x 3" x 3" x 3" x 3"	Angle Outlet	Female NPT	Female NPT	Red Enamel	1	60 lbs.
FDC142-01RB	4-Way	6" x 3" x 3" x 3" x 3"	Angle Outlet	Female NPT	Female NPT	Rough Brass	0	26 lbs.
FDC142-01RC	4-Way	6" x 3" x 3" x 3" x 3"	Angle Outlet	Female NPT	Female NPT	Rough Chrome	0	26 lbs.
FDC146-03SG	4-Way	6" x 3" x 3" x 3" x 3" (square)	Back Outlet	Groove	Groove	Red Enamel	1	34 lbs.
FDC146-03S	4-Way	6" x 3" x 3" x 3" x 3" (square)	Back Outlet	Groove	Female NPT	Red Enamel	1	36 lbs.
FDC145-03SG	4-Way	6" x 3" x 3" x 3" x 3" (square)	Angle Outlet	Groove	Groove	Red Enamel	1	37 lbs.
FDC145-03S	4-Way	6" x 3" x 3" x 3" x 3" (square)	Angle Outlet	Groove	Female NPT	Red Enamel	1	39 lbs.
FDC145-01RB	4-Way	6" x 3" x 3" x 3" x 3" (square)	Angle Outlet	Female NPT	Female NPT	Rough Brass	0	40 lbs.
FDC145-01RC	4-Way	6" x 3" x 3" x 3" x 3" (square)	Angle Outlet	Female NPT	Female NPT	Rough Chrome	0	40 lbs.
FDC164-03SG	6-Way	6" x 3" x 3" x 3" x 3" x 3" x 3"	End Outlet	Groove	Groove	Red Enamel	3	72 lbs.
FDC164-03S	6-Way	6" x 3" x 3" x 3" x 3" x 3" x 3"	End Outlet	Groove	Female NPT	Red Enamel	3	72 lbs.
FDC164-04SG	6-Way	8" x 3" x 3" x 3" x 3" x 3" x 3"	End Outlet	Groove	Groove	Red Enamel	3	79 lbs.
FDC164-04S	6-Way	8" x 3" x 3" x 3" x 3" x 3" x 3"	End Outlet	Groove	Female NPT	Red Enamel	3	79 lbs.

## Dimensions continued on page 3

\* Dimensions do not include FDC142-01RB, FDC142-01RC, FDC145-01RB, and FDC145-01RC

